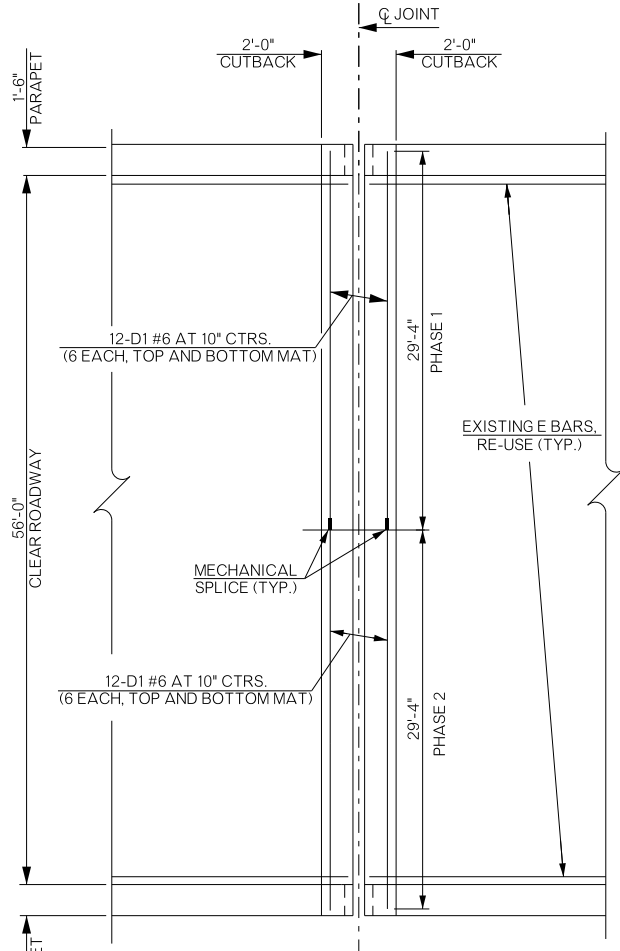
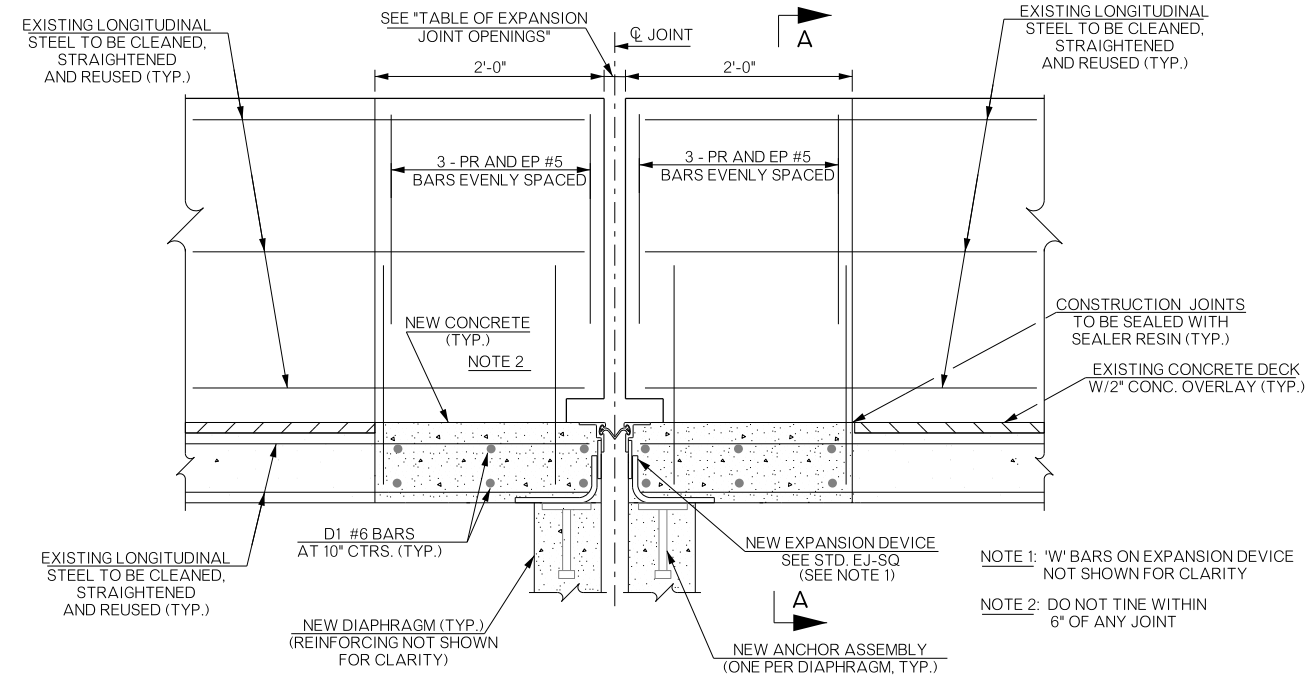


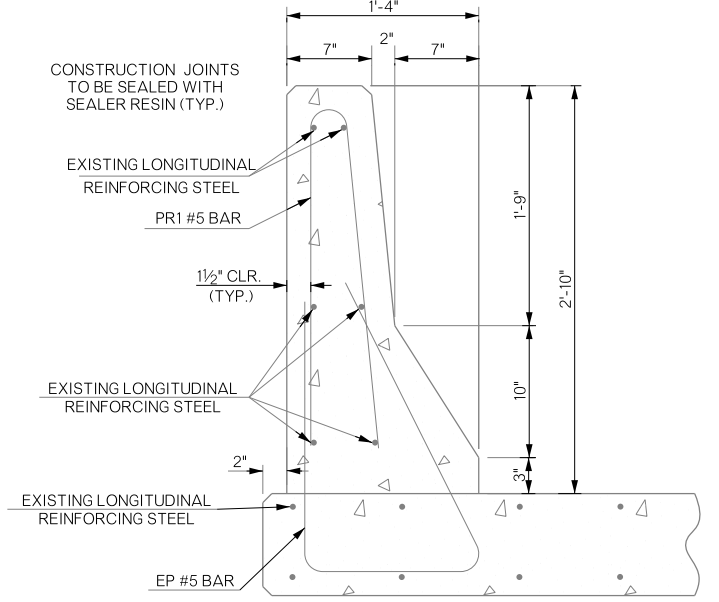
| REVISIONS | | |
|-----------|-------------|------|
| REV. NO. | DESCRIPTION | DATE |
| | | |



REHAB. EXP. JOINT PLAN VIEW (TYP.)



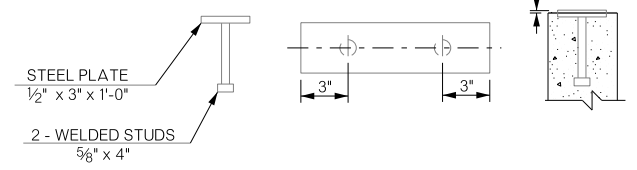
TYPICAL SECTION OF REHABILITATED EXPANSION JOINT (REPAIR BRIDGE ITEM (TYPE A))



SECTION A-A

| EXPANSION JOINT OPENING SETTINGS BRIDGE 'A' | | | |
|---|---------|------------|---------|
| PIERS 1, 3, 5, 7, 9, 11, 13, 15, 17 | | PIER 18 | |
| TEMP. (°F) | OPENING | TEMP. (°F) | OPENING |
| 102 | 1 1/8" | 110 | 1 1/2" |
| 94 | 1 1/4" | 93 | 1 5/8" |
| 85 | 1 3/8" | 77 | 1 3/4" |
| 77 | 1 1/2" | 60 | 1 7/8" |
| 68 | 1 5/8" | 43 | 2" |
| 60 | 1 3/4" | 26 | 2 1/8" |
| 51 | 1 7/8" | 9 | 2 1/4" |
| 43 | 2" | | |
| 35 | 2 1/8" | | |
| 26 | 2 1/4" | | |
| 18 | 2 3/8" | | |
| 9 | 2 1/2" | | |
| 1 | 2 5/8" | | |

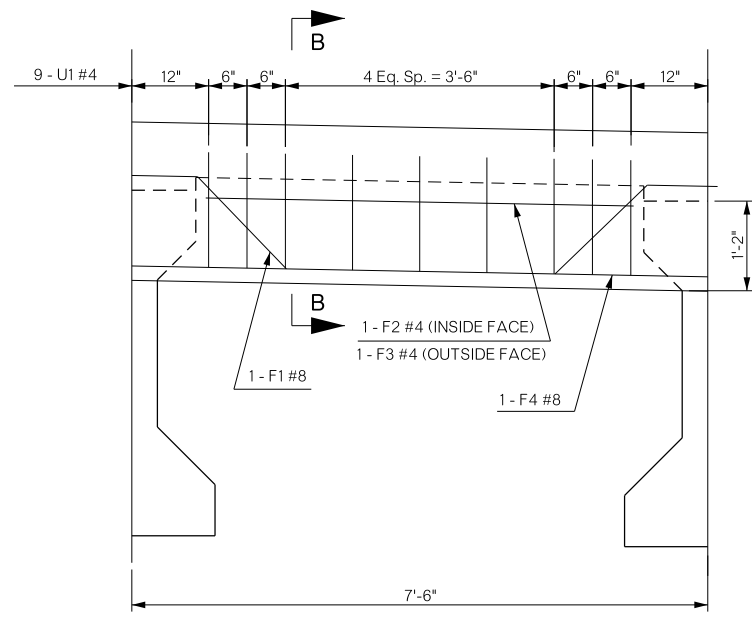
| EXPANSION JOINT OPENING SETTINGS BRIDGE 'B' | |
|---|---------|
| EXP. PIERS | |
| TEMP. (°F) | OPENING |
| 100 | 1 1/4" |
| 91 | 1 3/8" |
| 81 | 1 1/2" |
| 72 | 1 5/8" |
| 62 | 1 3/4" |
| 53 | 1 7/8" |
| 43 | 2" |
| 33 | 2 1/8" |
| 24 | 2 1/4" |
| 14 | 2 3/8" |
| 5 | 2 1/2" |



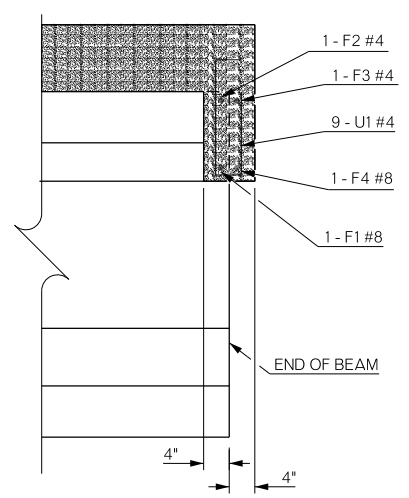
DETAIL OF ANCHOR ASSEMBLY

| BAR LIST (ONE EXP. JOINT) EPOXY COATED | | | | |
|--|-----|------|------|---------|
| MARK | NO. | SIZE | FORM | LENGTH |
| (A) D1 | 12 | #6 | STR. | 29'-4" |
| (B) D1 | 12 | #6 | STR. | 29'-4" |
| (A) EP | 6 | #5 | BNT. | 5'-5" |
| (B) EP | 6 | #5 | BNT. | 5'-5" |
| (A) F1 | 8 | #8 | BNT. | 8'-8" |
| (B) F1 | 6 | #8 | BNT. | 8'-8" |
| (A) F2 | 8 | #4 | STR. | 5'-6" |
| (B) F2 | 6 | #4 | STR. | 5'-6" |
| (A) F3 | 1 | #4 | STR. | 26'-11" |
| (B) F3 | 1 | #4 | STR. | 26'-11" |
| (A) F4 | 1 | #8 | STR. | 26'-7" |
| (B) F4 | 1 | #8 | STR. | 26'-7" |
| (A) PR | 6 | #5 | BNT. | 5'-0" |
| (B) PR | 6 | #5 | BNT. | 5'-0" |
| (A) U1 | 64 | #4 | BNT. | 3'-3" |
| (B) U1 | 62 | #4 | BNT. | 3'-3" |

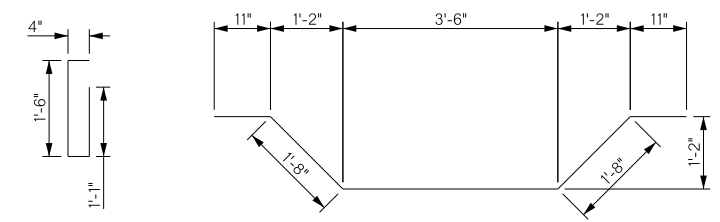
- (A) PHASE 1
- (B) PHASE 2



END DIAPHRAGM

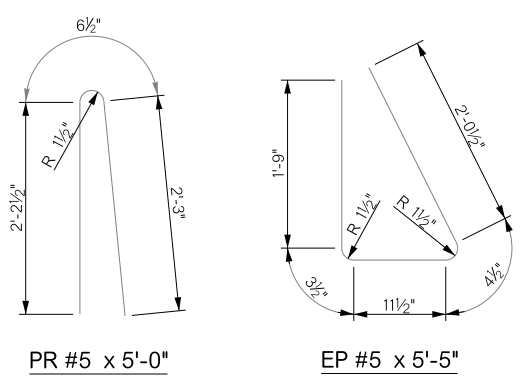


SECTION B-B



U1 #4 x 3'-3"

F1 #8 x 8'-8"



PR #5 x 5'-0"

EP #5 x 5'-5"

| QUANTITIES (ONE EXPANSION JOINT) | | |
|----------------------------------|------|----------|
| ITEM | UNIT | TOTAL |
| SEALED EXPANSION JOINT | L.F. | 60.00 |
| MECHANICAL SPLICES | EA. | 14.00 |
| STRUCTURAL STEEL | LB. | 98.00 |
| CLASS AA CONCRETE | C.Y. | 11.60 |
| EPOXY COATED REINFORCING STEEL | LB. | 2,020.00 |
| SEALER CRACK PREPARATION | L.F. | 112.00 |
| SEALER RESIN | GAL. | 1.00 |

| | | | | | |
|---|--|------------------------------|---------------|-----------|-----------|
| BRIDGE 'A' & 'B' US 64 OVER ARKANSAS RIVER | | TULSA COUNTY | Design | N/A | N/A |
| | | | Detail | RWM | 05/16 |
| | | | Check | KMS | 06/16 |
| | | | Squad | MAYFIELD | |
| | | | Engr. | ELYAZGI | |
| STATE OF OKLAHOMA | | DEPARTMENT OF TRANSPORTATION | JOB/PIECE NO. | 31944(04) | SHEET NO. |
| | | | | | B011 |